

# Al Khas & An Nu'man Village Profile



Prepared by



The Applied Research Institute – Jerusalem

Funded by



Spanish Cooperation



Azahar Program

2010

## *Acknowledgments*

*ARIJ hereby expresses its deep gratitude to the Spanish agency for International Cooperation for Development (AECID) for their funding of this project through the Azahar Program.*

*ARIJ is grateful to the Palestinian officials in the ministries, municipalities, joint services councils, village committees and councils, and the Palestinian Central Bureau of Statistics (PCBS) for their assistance and cooperation with the project team members during the data collection process.*

*ARIJ also thanks all the staff who worked throughout the past couple of years towards the accomplishment of this work.*

## Background

This booklet is part of a series of booklets, which contain compiled information about each city, town, and village in Bethlehem Governorate. These booklets came as a result of a comprehensive study of all localities in Bethlehem Governorate, which aims at depicting the overall living conditions in the governorate and presenting developmental plans to assist in developing the livelihood of the population in the area. It was accomplished through the "Village Profiles and Azahar Needs Assessment," the project funded by the Spanish Agency for International Cooperation for Development (AECID) and the Azahar Program.

The "Village Profiles and Azahar Needs Assessment" was designed to study, investigate, analyze and document the socio-economic conditions and the needed programs and activities to mitigate the impact of the current unsecure political, economic and social conditions in Bethlehem Governorate with particular focus on the Azahar program objectives and activities concerning water, environment, and agriculture.

The project's objectives are to survey, analyze, and document the available natural, human, socioeconomic and environmental resources, and the existing limitations and needs assessment for the development of the rural and marginalized areas in Bethlehem Governorate. In addition, the project aims at preparing strategic developmental programs and activities to mitigate the impact of the current political, social, and economic instability with the focus on the agricultural sector.

All locality profiles in Arabic and English are available online at <http://proxy.arij.org/vprofile>.

## Table of Content

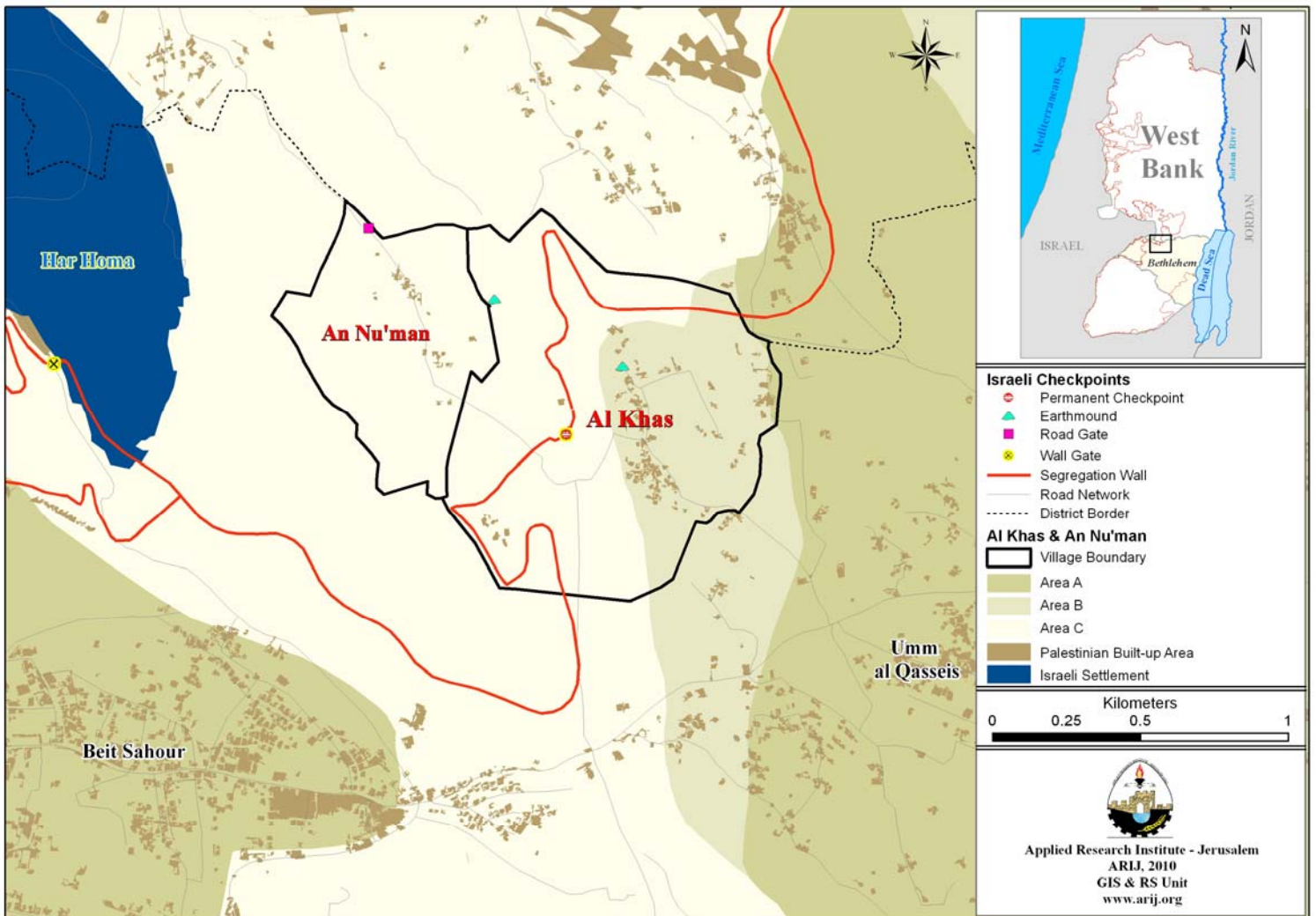
<i>Location and Physical Characteristics</i> _____	4
<i>History</i> _____	5
<i>Religious and Archaeological Sites</i> _____	6
<i>Population</i> _____	7
<i>Education</i> _____	7
<i>Health Status</i> _____	8
<i>Economic Activities</i> _____	8
<i>Agricultural Sector</i> _____	10
<i>Institutions and Services</i> _____	13
<i>Infrastructure and Natural Resources</i> _____	13
<i>Environmental Conditions</i> _____	16
<i>Impact of the Israeli Occupation</i> _____	17
<i>Development Plans and Projects</i> _____	21
<i>Implemented Projects</i> _____	21
<i>Proposed Projects</i> _____	21
<i>Locality Development Priorities and Needs</i> _____	22
<i>References:</i> _____	23

# Al Khas and An Nu'man Village Profile

## Location and Physical Characteristics

Al Khas and An Nu'man is a Palestinian village in Bethlehem Governorate located 4.5km (horizontal distance) north-east of Bethlehem City. Al Khas and An Nu'man is bordered by Dar Salah village to the east, Sur Baher, Umm Tuba, and Jerusalem to the north, Jabal Abu Ghneim and Beit Sahour city to the west, and Dar Salah village and Beit Sahour city to the south (See map 1).

Map 1: Al Khas and An Nu'man location and borders



Al Khas and An Nu'man is located at an altitude of 576m above sea level with a mean annual rainfall of 356mm. The average annual temperature is 17° C, and the average annual humidity is about 60 percent (ARIJ GIS, 2009).

Since 1994, Al Khas and An Nu'man has been governed by a village council which is currently administrated by five members appointed by the Palestinian Authority. There are also 2 employees working in the council. The village council owns a permanent headquarters, a vehicle to collect solid waste shared by Dar Salah and ash Shawawra, and a private car.

It is the responsibility of the village council to provide the listed services to the residents of Al Khas and An Nu'man, including:

1. Infrastructure services such as water and electricity.
2. Implementation of projects and case studies for Al Khas and An Nu'man Village.

## History

The name Al Khas (private) came from the privacy of its location, as it is located near the city of Jerusalem, and is considered the southern gate of Jerusalem. However, the name of An Nu'man village goes back to the traveler, Nu'man Ben Bisher, who resided there. Al Khas and An Nu'man village dates back to 1900, and its residents originate from Arab at Ta'amreh village.

**Photo of Al Khas and An Nu'man**

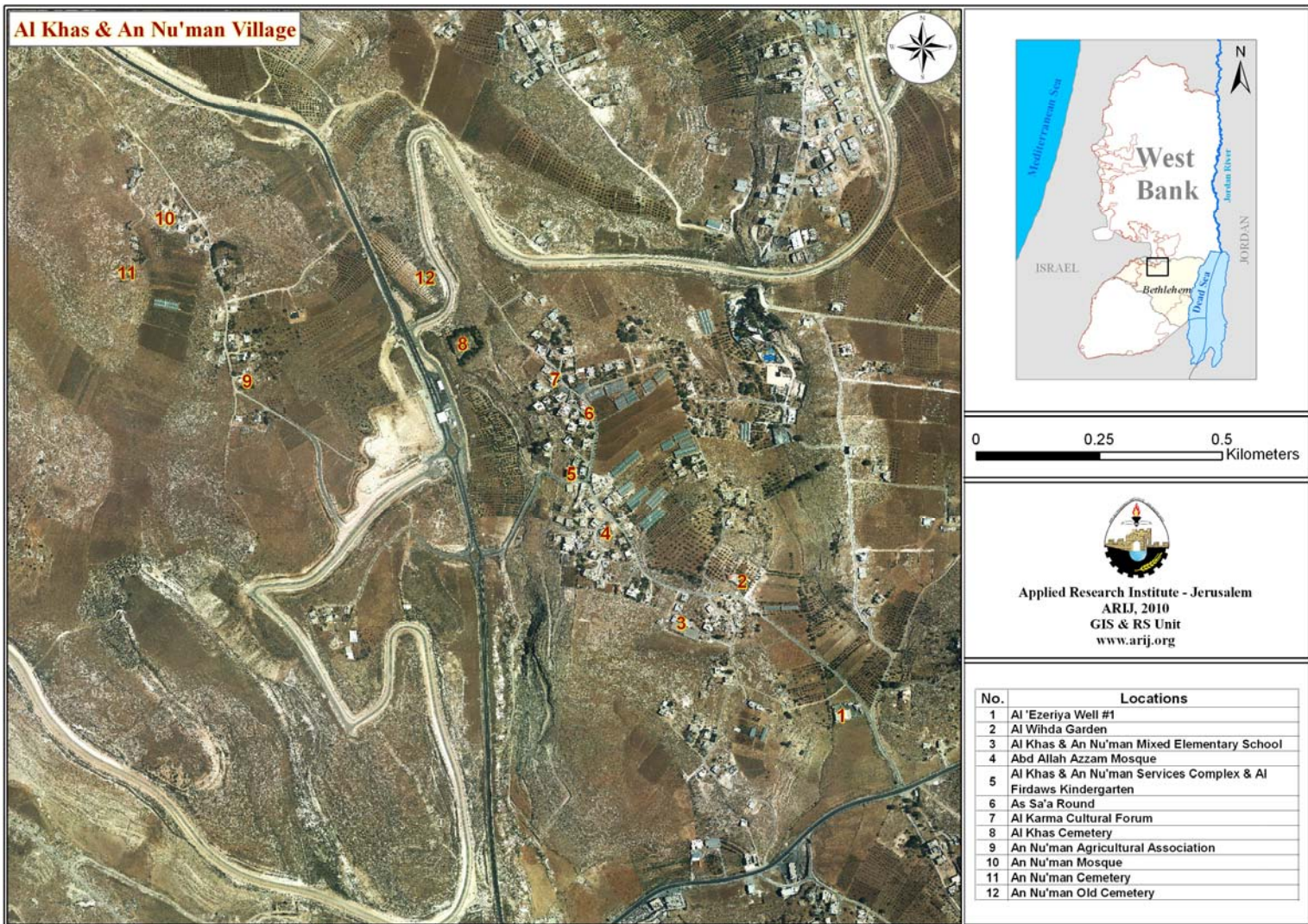


## Religious and Archaeological Sites

In terms of religious establishments, there are two mosques in Al Khas and An Nu'man: Abd Allah Al Azzam and An Nu'man mosques.

As for the archaeological sites in the village; there are some old houses that date back to more than 100 years, and some old historic caves, especially in An Nu'man area, that are more than 300 years old (See map 2).

**Map 2: Main locations in Al Khas and An Nu'man village**



## Population

According to the Palestinian Central Bureau of Statistics (PCBS), the total population of Al Khas and An Nu'man in 2007 was 567; of whom 280 are males and 287 are females. There are 106 households living in 126 housing units.

### Age Groups and Gender

The General Census of Population and Housing carried out by PCBS in 2007 showed the distribution of age groups in Al Khas and An Nu'man is as follows: 42.6 percent are less than 15 years, 53.2 percent are between 15 - 64 years, and 4.2 percent are 65 years and older. Data also showed that the sex ratio of males to females in the village is 97.5:100, meaning that males constitute 49.4 percent of the population, and females constitute 50.6 percent of the population.

### Families

The inhabitants of Al Khas and An Nu'man village are composed of several families, mainly: Hmeidán, Hamdan, Dar'awi, Rabi'a, and Shawawra.

### Immigration

The field survey showed that four families composed of 30 members, have left the village because of the homes demolishing policy, and the inability to build new houses.

## Education

According to the results of the PCBS Population, Housing and Establishment Census-2007, the illiteracy rate among Al Khas and An Nu'man population is about 7.1 percent, of whom 63 percent are females. Of the literate population, 14 percent can read and write, 24 percent had elementary education, 28.7 percent had preparatory education, 21.2 percent had secondary education, and 12.1 percent completed higher education. Table 1, shows the educational level in the village of Al Khas and An Nu'man, by sex, and educational attainment in 2007.

Sex	Illiterate	Can read & write	Elementary	Preparatory	Secondary	Associate Diploma	Bachelor	Higher Diploma	Master	PhD	Total
M	10	21	32	68	31	5	14	-	3	2	<b>186</b>
F	17	29	53	34	44	2	14	-	3	-	<b>196</b>
<b>T</b>	<b>27</b>	<b>50</b>	<b>85</b>	<b>102</b>	<b>75</b>	<b>7</b>	<b>28</b>	<b>-</b>	<b>6</b>	<b>2</b>	<b>382</b>

Source: PCBS, 2009. Population, Housing and Establishment Census-2007, Final Results



In regards to the basic and secondary education institutions and schools in Al Khas and An Nu'man in the academic year 2008/2009, there is one public mixed school in the village, run by the Palestinian Ministry of Higher Education; Al Khas and An Nu'man Mixed Elementary School. There are no private schools in Al Khas and An Nu'man.

In the villages there is a total number of 203 students; 12 teachers, and 10 classes. It should be noted here that the average number of students per teacher in the school is nearly 17, while the average number of students per class is approximately 21 (Directorate of Education in Bethlehem, 2009). Due to the lack of secondary educational institutions in the village, students head to the neighboring villages of Dar Salah, Al 'Ubediya and Beit Sahour city in order to complete their secondary education.

Furthermore there is one kindergarten in Al Khas and An Nu'man; Al Firdaws Kindergarten, which is run by a charitable organization and has a total number of 50 children.

## Health Status

There are no health facilities available in Al Khas and An Nu'man village. In emergency cases, residents of Al Khas and An Nu'man use Bethlehem hospitals and health centers, such as: Beit Al Maqdis Center in Dar Salah village, which is about 3km from the village, the Greek Catholic Monastery Clinic in Beit Sahour city, which is about 4km from the village, and Beit Jala Governmental Hospital (Al Hussein), which is about 13km from the village.

The residents of Al Khas and An Nu'man suffer from the absence of clinics and health centers in the village.

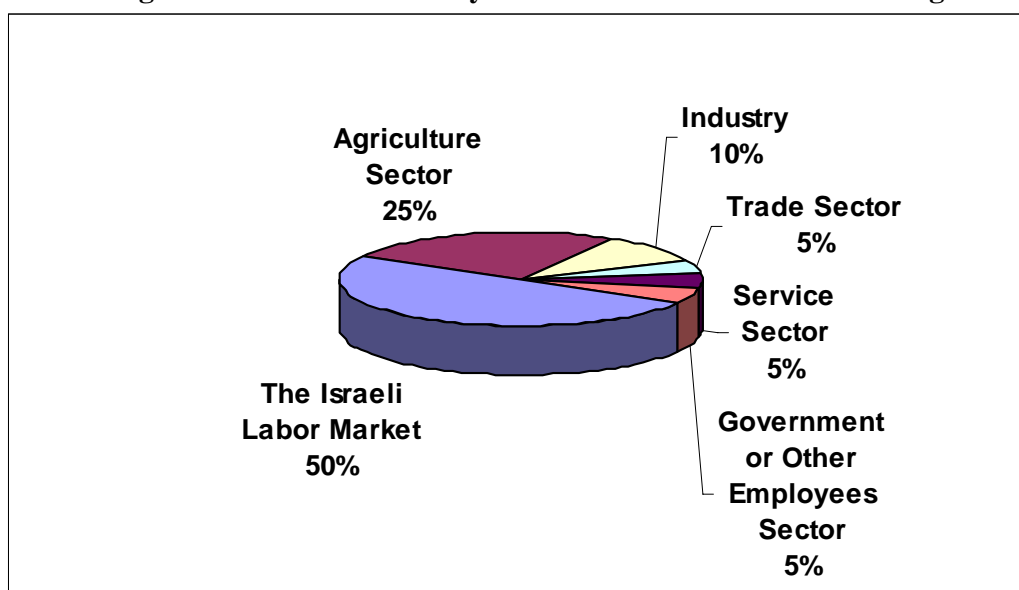
## Economic Activities

The economy in Al Khas and An Nu'man is dependent on several economic sectors, mainly: the Israeli Labor Market, which absorbs 50 percent of the village workforce (See Figure1).

The results of a field survey for the distribution of labor by economic activity in Al Khas and An Nu'man are the following:

- Israeli Labor Market (50%)
- Agriculture Sector (25%)
- Industry (10%)
- Trade Sector (5%)
- Service Sector (5%)
- Government or Other Employees Sector (5%)

**Figure 1: Economic Activity in Al Khas and An Nu'man Village**



There are some economic and industrial activities in Al Khas and An Nu'man, mainly: agriculture, in addition to 3 grocery stores and 3 different workshops (Blacksmith, carpentry, and aluminum).

As a result of the Israeli occupation and restrictions, the economic status of the population has severely declined as many citizens have lost their jobs and have become unemployed, thus forcing them to work in the service sector and agricultural activities, as a last resort for obtaining a minimum income.

The unemployment rate in Al Khas and An Nu'man has reached about 30 percent. It was found that the most vulnerable social groups in the town, as a result of Israeli actions, are:

1. Workers in the agriculture sector.
2. Workers in the workers sector.
3. Workers in construction sector.

## Labor Force

According to the PCBS Population, Housing and Establishment Census-2007, 33.8 percent of Al Khas and An Nu'man population were economically active, of whom 89.9 percent were employed, 64.9 percent were not economically active, 52.4 percent were students, and 34.3 percent were housekeepers (See table 2).

SEX	Economically Active				Not Economically Active						Total
	Employed	Currently Unemployed	Unemployed (Never worked)	Total	Students	House-keeping	Unable to work	Not working & Not looking for work	Other	Total	
M	105	6	3	<b>114</b>	51	-	16	-	2	<b>69</b>	<b>186</b>
F	11	-	4	<b>15</b>	79	85	15	-	-	<b>179</b>	<b>196</b>
<b>T</b>	<b>116</b>	<b>6</b>	<b>7</b>	<b>129</b>	<b>130</b>	<b>85</b>	<b>31</b>	<b>-</b>	<b>2</b>	<b>248</b>	<b>382</b>

Source: PCBS, March 2009. Population, Housing and Establishment Census-2007, Final Results

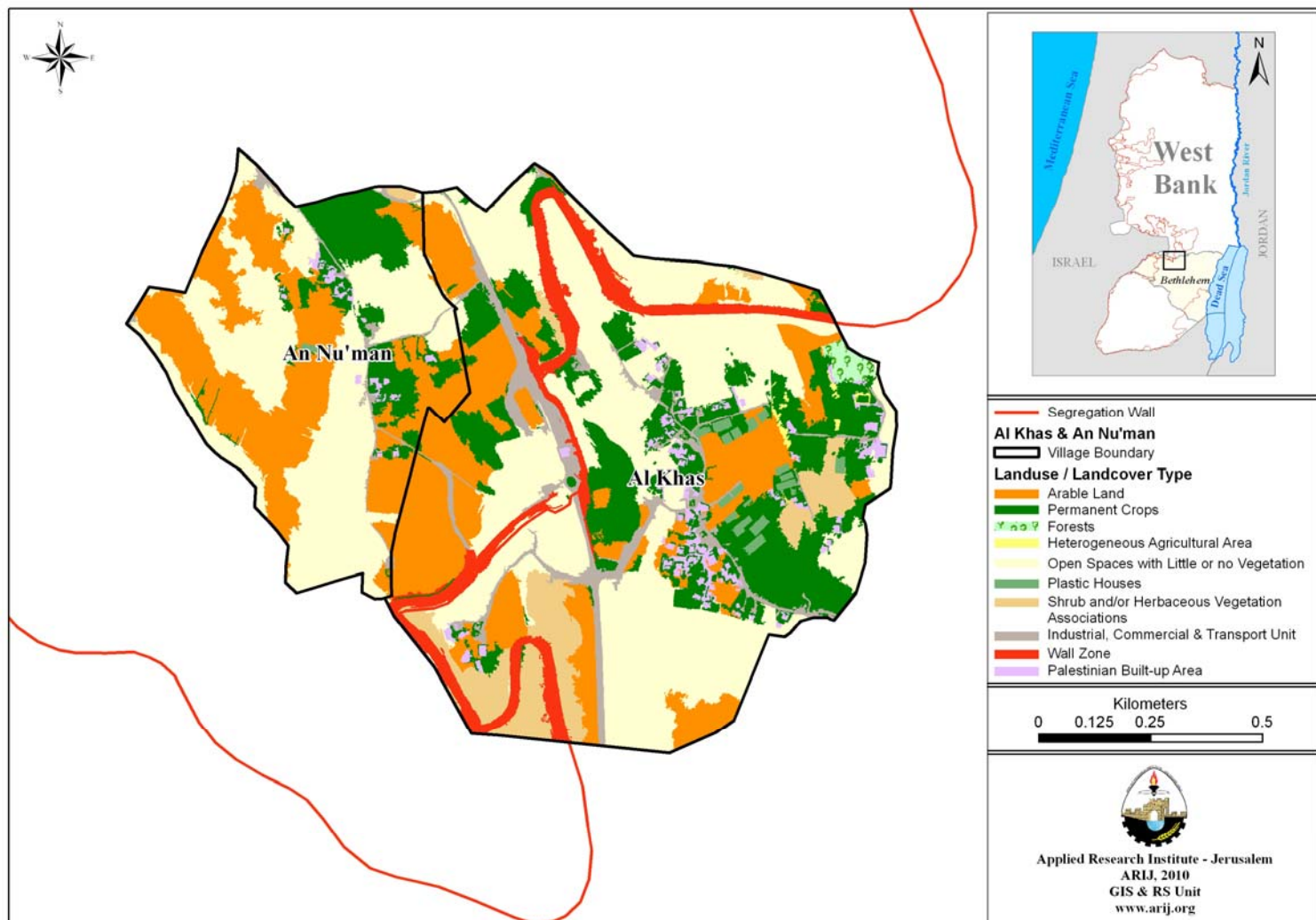
## Agricultural Sector

Al Khas and An Nu'man lies on a total area of about 1,474 dunums of which 1,294 dunums are considered arable land, and 31 dunums are residential land (See table 3 and map 3).

Total Area	Built up Area	Arable Land (1,294)					Area of Industrial, Commercial & Transport Unit	Area of Settlements and Military Bases
		Seasonal Crops	Permanent Crops	Greenhouses	Forests	Open Spaces and Rangelands		
1,474	31	364	254	12	7	657	73	76

Source: GIS unit – ARIJ, 2009

Map 3: Land use/land cover and Segregation Wall in Al Khas & An Nu'man Village



Agriculture production in Al Khas and An Nu'man depends mostly on rainwater. As for irrigated fields, they depend on the public water network and domestic harvesting cisterns.

Table 4 shows the different types of rain-fed and irrigated open-cultivated vegetables in Al Khas and An Nu'man. The most common crop cultivated within this area is tomato.

Fruity vegetables		Leafy vegetable		Green legumes		Bulbs		Other vegetables		Total area	
RF	Irr.	RF	Irr.	RF	Irr.	RF	Irr.	RF	Irr.	RF	Irr.
9	9.5	0	5.5	0	3	0	0	0	4	9	22

Rf: Rain-fed, Irr: Irrigated

Source: Palestinian Ministry of Agriculture, 2007

There are also 12 dunums of land on which there are greenhouses planted with different vegetables, mainly: cucumber.

Table 5 shows the different types of fruit trees planted in the area. Al Khas and An Nu'man is characterized with olive tree harvesting; a total area of 250 dunum is cultivated with olive trees.

Olives		Citrus		Stone-fruits		Pome fruits		Nuts		Other fruits		Total area	
Rf	Irr.	Rf	Irr.	Rf	Irr.	Rf	Irr.	Rf	Irr.	Rf	Irr.	Rf	Irr.
250	0	0	0	0	0	0	0	20	0	5	0	275	0

*Rf: Rain-fed, Irr: Irrigated*

*Source: Palestinian Ministry of Agriculture, 2007*

As for the field crops and forage in Al Khas and An Nu'man, cereals, in particular wheat and barley are the most cultivated crops covering an area of about 570 dunums, while forage crops, such as bitter vetch and common vetch are the second most cultivated crops (See table 6).

Cereals		Bulbs		Dry legumes		Oil crops		Forage crops		Stimulating crops		Other crops		Total area	
Rf	Irr	Rf	Irr	Rf	Irr	Rf	Irr	Rf	Irr	Rf	Irr	Rf	Irr	Rf	Irr
570	0	0	0	22	0	0	0	30	0	0	0	0	0	622	0

*Rf: Rain-fed, Irr: Irrigated*

*Source: Palestinian Ministry of Agriculture, 2007*

The field survey shows that most of the residents in Al Khas and An Nu'man are rearing and keeping domestic animals such as sheep, goats, broiler chicken, and bees (See Table 7).

Cows*	Sheep	Goats	Camels	Horses	Donkeys	Mules	Broilers	Layers	Bee Hives
0	339	233	0	1	2	2	10,800	0	40

\*Including cows, bull calves, heifer calves and bulls

*Source: Palestinian Ministry of Agriculture, 2007*

There are about 7 kilometers of agricultural roads in the village suitable for tractors and agricultural machinery.

## Institutions and Services

Al Khas and An Nu'man has a small number of local institutions and associations that provide services to various segments of society: children, youth, and women. The services are in the areas of culture, sports and others, including:

- **Al Khas and An Nu'man Village Council:** Founded in 1994 by the Ministry of Local Government with the goal of taking care of all the issues in the village and providing all kind of services to its population.
- **An Nu'man Agriculture Society:** Founded in 2005 in order to assist and serve the farmers and help in the development of agriculture.
- **Al Karma Cultural Forum:** Founded in 2007 by a local committee and is interested in cultural activities in the village.

## Infrastructure and Natural Resources

### Electricity and Telecommunication Services:

Al Khas and An Nu'man has been connected to a public electricity network since 1995; served by Jerusalem Electricity Company, which is the main source of electricity in the village. Approximately 99.3 percent of the housing units in the village are connected to the network, while the remaining units are dependent on private generators for electricity (0.7%) (Central Bureau of Statistics Palestinian, 2007).

Furthermore, Al Khas and An Nu'man is connected to a telecommunication network and approximately 11.5 percent of the housing units within the village boundaries are connected to phone lines (Central Bureau of Statistics Palestinian, 2007).

### Transportation Services:

Private cars and taxis that belong to Dar Salah village are the two main means of transportation in Al Khas and An Nu'man. As for the road network in the village; there are a total of 4km of main roads; 3km of which are paved and in good condition, and 1km paved but in bad condition, and a total of 7km of secondary roads; of which 4km are paved and in good condition, 2km are paved but in bad condition, and 1km is unpaved (Al Khas and An Nu'man village council, 2009).

**Water Resources:**

Al Khas and An Nu'man is provided with water by Palestinian Water Authority (PWA), through the public water network established in 1980, and about 96.5 percent of the housing units are connected to the water network (PCBS, 2007). The quantity of water supplied to Al Khas and An Nu'man in 2008 was about 36,000 cubic meters/year, therefore the estimated rate of water supply per capita is about 175 liters/day (Al Khas and An Nu'man village council, 2010).

Here it should be noted that many Al Khas and An Nu'man citizens do not in fact consume this amount of water due to water losses, which are about 39 percent. The losses happen at the main source, major transport lines, distribution network, and at the household level (PWA, 2008), thus the rate of water consumption per capita in Al Khas and An Nu'man is 107 liters per day. This is a low rate compared with the minimum quantity proposed by the World Health Organization, which is 100 liters per capita per day.

Also, there are 35 rainwater harvesting cisterns in Al Khas and An Nu'man in addition to a public water tank with 500 cubic meter capacity (Al Khas and An Nu'man village council, 2009).

**Sanitation:**

Al Khas and An Nu'man lack a public sewage network; most of the population uses cesspits as a means for wastewater disposal. According to PCBS's Population and Housing Census in 2007 and PWA data, the majority of Al Khas and An Nu'man's housing units (100%) use cesspits for wastewater disposal.

Based on the estimated daily per capita water consumption, the estimated amount of wastewater generated per day is approximately 48 cubic meters, or 17,520 cubic meters annually. At the individual level in the village, it is estimated that the per capita wastewater generation is approximately 85 liters per day. The wastewater collected by cesspits is discharged by wastewater tankers directly to open areas or nearby valleys without any regard for the environment. Here it should be noted that there is no wastewater treatment either at the source or at the disposal sites which poses a threat to the environment and the public health.

**Solid Waste Management:**

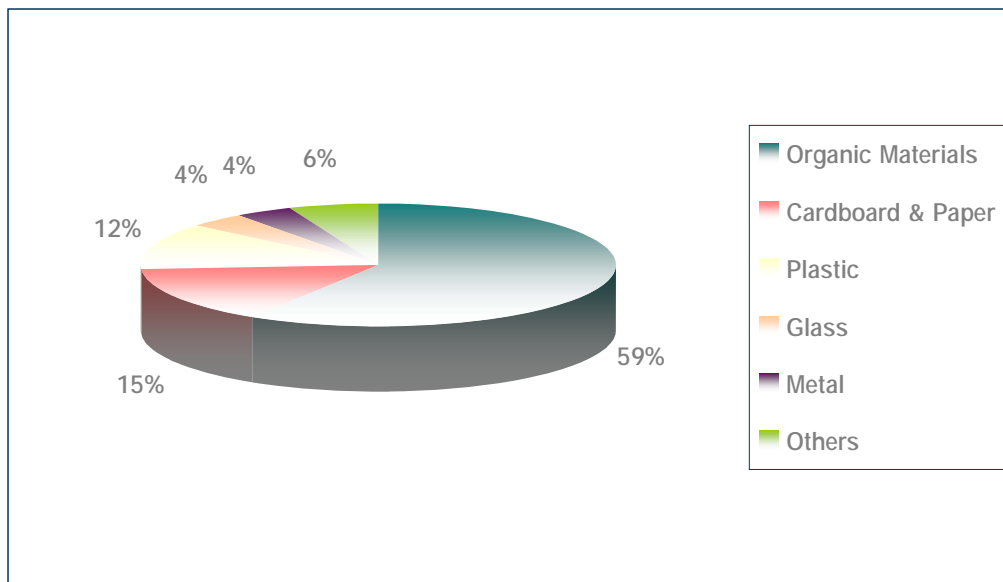
Joint Services Council for the Eastern Countryside is considered the official body responsible for managing solid waste, i.e. solid waste collection and disposal, generated from the citizens and establishments in Al Khas and An Nu'man, which is currently represented by solid waste collection and disposal. Due to the fact that the process of solid waste management is costly, a monthly fee has been charged on the population serviced by domestic solid waste collection and transportation services which is about 15 NIS/month. However, the collected fees are not considered sufficient for a good

management of solid waste. In general the solid waste management in Bethlehem governorate and in other West Bank governorates is based on the voluntary contributions of donor countries.

Most of the population in Al Khas and An Nu'man benefit from the solid waste services, where waste is collected from households, institutions, shops, and public squares in plastic bags and then transferred to 20 containers, with a capacity of 1.5 cubic meters each, spread throughout the neighborhoods. The joint services council collects the solid waste from the containers two days a week and transports it to Dar Salah dumping site, 25km from Al Khas and An Nu'man. The common method for solid waste treatment in the dumping site is setting waste on fire or sometimes burying it. It should be mentioned here that household hazardous waste, industrial, and commercial solid waste is collected with other non-hazardous municipal waste and dumped into the same landfill with the absence of any special system for separation and/or collection. The largest volume of solid waste is household waste which makes up around 45-50 percent of total capacity of solid waste.

The daily per capita rate of solid waste production in Al Khas and An Nu'man is 0.7kg. Thus the estimated amount of solid waste produced per day from the Al Khas and An Nu'man residents is nearly 397kg, or 145 tons per year. The main component of household solid waste is composed of organic materials, followed by paper and cardboard, and then by plastic, as shown in Figure 2 below:

**Figure 2: The components of the household solid waste produced**





## Environmental Conditions

Like other villages in the governorate, Al Khas and An Nu'man experience several environmental problems which must be addressed and solved; these problems can be identified as follows:

### **Water Crisis:**

Al Khas and An Nu'man village suffers from the worn out public water network, that is in need of rehabilitation, causing high rates of water losses in the water network.

### **Wastewater Management:**

The absence of a public sewage network, thus, the use of cesspits for the disposal of wastewater, and the discharge of wastewater in the streets, especially in winter, because the citizens can not afford the high cost of sewage tankers. All of this causes environmental damages, health problems, and the spread of epidemics and diseases in the village. The use of cesspits pollutes the groundwater and water collected in domestic cisterns (rainwater harvesting cisterns) as the wastewater mixes with water and contaminates it and thus makes it inappropriate for human consumption. This is due to the fact that most cesspits are built without lining, which allows wastewater to enter into the ground and avoids the need to use sewage tankers from time to time. Moreover, the untreated wastewater collected from cesspits by sewage tankers is disposed of in open areas without taking into account the damage it causes to the environment and the residents' health.

### **Solid Waste Management:**

The lack of a central sanitary landfill to service Al Khas and An Nu'man and the other communities in the governorate is due mainly to the obstacles created by the Israeli authorities for local and national institutions, like granting licenses to establish such a landfill, because the appropriate land is within Area C, under the Israeli full control. In addition, the implementation of such projects depends on funding from donor countries. Thus, the lack of a sanitary landfill is a hazard risk for the health, a source of pollution to the groundwater and soil through the leachate produced from the solid waste, and it creates bad odors and distortion of the landscape. It should be noted here that a sanitary landfill is being under construction, at the time, in Al Maniya area, south of Bethlehem governorate, to serve Bethlehem and Hebron governorates

There is an absence of a system in the village and the governorate in general that separates hazardous waste from non-hazardous waste, consequently hazardous solid waste is collected with non-hazardous waste and transported to Dar Salah landfill for disposal by burning.

**Other problems:**

- The limited role of the village council, like other councils and municipalities, in providing certain services only, without considering other various aspects for development.
- The absence of the rule of law and the inadequacy of the executive branch.

**Impact of the Israeli Occupation**

Following the Israeli occupation of the West Bank, including East Jerusalem and the Gaza Strip in 1967, Israel annexed An Nu'man village into Jerusalem municipal boundaries, which Israeli has illegally prepared and included in its influence area, at the expense of many Palestinian territories. Despite the annexation of, the village residents were registered as West Bank residents and were not given Israeli identity cards and residency.

This situation did not have any impact on the lives of An Nu'man residents for many years, until Israel began imposing closure policies and cracking down on the Palestinian towns and villages in 1993. At this time the village residents were surprised by the notifications, that the municipality of Jerusalem headed by Ehud Olmert at the time, was distributing to the people of the village, which stated that An Nu'man village lands are located within Jerusalem municipal boundaries and that the residents are living illegally in it, thus, they have to leave.

Later, Jerusalem Municipality stepped up its procedures against the village citizens, as they stopped issuing any building licenses and completely prevented the citizens from building, since the village territory was classified as unregulated green areas where no building is allowed upon them. The Jerusalem Municipality had also warned a number of home owners of demolition, under the pretext of illegal construction. In an attempt to intimidate the residents and force them to leave voluntarily the occupation bulldozers demolished a number of houses

Furthermore, the village children were deprived from studying in Sur Baher and Umm Tuba schools, which are subordinated by Jerusalem municipality, and are considered the closest schools to An Nu'man village, by a decision of the Israeli Ministry of Knowledge of Jerusalem municipality, which expelled Al Khas and An Nu'man students from the schools where they used to receive their education, under the pretext that they hold the West Bank identity.

The village residents have also faced some difficulties in entering Jerusalem city in order to work there, as most of the population used to work in the construction sector which

was considered a good source of income. However, considering that An Nu'man residents were not registered as residents of Jerusalem city, despite the fact that their lands were annexed to the city limits, the villagers were prevented from entering, working or staying overnight in the city without a special permit issued by the Israeli Civil Administration. Moreover, the Jerusalem Municipality did not provide any services to the village residents, although they exist within Jerusalem municipal boundaries, forcing them to take refuge in the nearby services centers inside the West Bank.

According to Oslo Interim Agreement, signed in September 1995, between the Palestinian National Authority and the Israeli government, Al Khas and An Nu'man village territories were classified into areas A, B and C (See Table 8).

Land Classification	Area (dunums)	% of the Total Area
Area A	8	0.5
Area B	377	25.6
Area C	1089	73.9
<b>Total Area</b>	<b>1474</b>	<b>100</b>

Source: GIS unit –ARIJ 2009

### **Israeli Military Orders issued against Al Khas and An Nu'man village**

Since Israel's announcement to start building the racist Segregation Wall in June 2002, the Israeli occupation forces have been distributing military orders to the targeted villages to confiscate the lands for the construction of the wall. Al Khas and An Nu'man village were of the first villages in Bethlehem governorate that got surprised by the risk of the racist Segregation Wall, which is part of the separation wall that Israel is building around Jerusalem, in order to isolate it from the rest of the West Bank governorates. In July 2003, Al Khas and An Nu'man village received military orders to confiscate 136 dunums of agricultural land in the area for the construction of the racist Segregation Wall.

As a continuation of the unilateral racist Segregation Plan, on September 16, 2003 the Israeli occupation forces handed An Nu'man village new military orders to confiscate another 47 dunums of the village land to complete the construction of the wall. The Israeli occupation forces were not satisfied with these confiscations, thus, more military orders were issued on the twenty-sixth of the same month (September 2003) to confiscate another 100 dunums for the construction of a 1.2km in length and 160m in width settlement Street, along the Wall line, in order to link Za'tara bypass street (Lieberman Street), which was initiated in February 2002, to Har Homa settlement (Abu Ghneim) north of the village, and eventually to Jerusalem settlements.

### **Mazmurya Commercial Crossing**

On the third of September, 2005, the Israeli occupation authorities handed the residents of Al Khas and An Nu'man village four Israeli military orders that hold the numbers:

(156/05/ T), (155/05/ T), (154/05/ T), (52/05) in preparation for establishing Mazmurya crossing and other roads that are connected to the crossing. The total amount of the confiscated land, as stated in the military orders, is 43 dunums of Beit Sahour city and An Nu'man village lands (Table 9).

<b>Military Order No.</b>	<b>Total of Confiscated Land (dunum)</b>	<b>Parcel No.</b>	<b>Palestinian Locality</b>	<b>Purpose</b>
<b>154/05/T</b>	9	13	An Nu'man village	Establishing a road leading to Al Walaja village
<b>155/05/T</b>	30	13	An Nu'man village	For military purposes and the establishment of a crossing
			Beit Sahour	
<b>156/05/T</b>	4	13	An Nu'man village	Expanding Mazmurya crossing and establishing a road leading to Al Khas village
			Beit Sahour	
<b>52-05</b>		13	Khirbet Mazmurya	Establishing a road leading to Har Homa settlement (Abu Ghneim)
<b>Total</b>	<b>43</b>			

Source: GIS & Urbanization units –ARIJ 2009

The plan to build the crossing was not the outcome of 2005. In October, 2003, the Israeli occupation authorities handed Al Khas and An Nu'man residents a map showing the breakdown details of the crossing that will be built in the region in addition to an Israeli military camp that will be built in order to protect the commercial crossing and the segregation wall, which will take up a total of 84 dunums of land in the area located behind the wall. The map that the village residents received showed a settlement road adjacent to the wall in the region that links the crossing and military camp to the Israeli settlements east of the city with those in the north, and then to the Jerusalem settlements. The residents submitted an opposition document to the Israeli High Court of Justice on those issued plans, which led to holding up the implementation of Israeli schemes in the region; at least, until the beginning of the first quarter of 2005, nevertheless, Israeli bulldozers entered the village territory and started the implementation of its schemes.

It is worth mentioning that the renewal of the crossing construction's announcement in September 2005 came months after the Israeli bulldozers begin working in the region, as the Israeli army swept vast areas of agricultural and grazing lands in the region, in addition to uprooting many productive olive trees for the construction of the racist Segregation Wall, and for the construction of the crossing.

### **New military orders to complete the construction of the crossing**

Two years after the Israeli occupation authorities declared its intention to establish Mazmurya commercial crossing on Al Khas and An Nu'man village territory, east of Beit Sahour city, the Israeli occupation authorities came back with new military orders to confiscate more land in the region in order to expand the area where Mazmurya commercial crossing is being established. On the morning of September 2, 2007, the

Israeli occupation forces handed Al Khas and An Nu'man village two new military orders, signed by the commander of the IDF in Judea and Samaria regions; the first, holding the number (31/07/T), declaring the confiscation of 22 dunums of agricultural land in the region 'for military purposes', to expand the crossing area. The second military order, holding the number (02/07/S), prevents entry and staying in an area of 2.7 dunums, located close to the crossing, as it was declared a closed area.. Moreover the order stated that each person who lives in the area to be confiscated must leave immediately (Table 10).

**Table 10: Israeli military orders issued for building the Racist Segregation Wall on Al Khas and An Nu'man village territory**

Military Order No.	Total of Confiscated Land (dunum)	Palestinian Locality	Purpose
An order to seize the territories No. (31/07/T) (Judea and Samaria), 5767-2007	22	Bethlehem, Beit Sahour (Al Khas and An Nu'man village)	Establishment of a crossing in Mazmurya
Declaring a closed area (02/07/ S) (Prevent entry and staying) (Judea and Samaria) 5767-2007	2.7	Beit Sahour	Declaring a closed area
<b>Total</b>	<b>24.7</b>		

Source: GIS & Urbanization units –ARIJ 2009

### The Segregation Wall in Al Khas and An Nu'man village

The Israeli occupation forces completed the construction of the racist Segregation Wall on Al Khas and An Nu'man village territory by the end of the third quarter of 2006. The Wall extends on 2.89km of the village territory; thus isolating and confiscating 776 dunums of agricultural lands, forests, and open spaces behind it, and separating these areas that have always been connected as if they were one city, sharing a social life and other services, into two parts. Moreover, in August 2006, the Israeli occupation forces established a new gate at the entrance of An Nu'man village to put it in isolation and separate it from the surrounding villages, and to have a full control over the movement of traffic and population (more than 200 citizens), in addition to controlling the entry of goods and service vehicles to the village.

Currently, this gate is considered An Nu'man residents' only way to the neighboring villages, where only the village residents and a limited number of service providers who are on a list of names owned by the Israeli army forces, are allowed to pass through it. The Israeli occupation army forces have also imposed restrictions on the entry of basic consumed supplies to the village. Moreover, most villagers are forced to move the supplies which they buy (heavy loads, such as flour, fodder, and gas cylinders) through the checkpoint to their homes in the village, on foot and for a distance of about 1.5 kilometers.

It is worth mentioning that since 2000 until now, the Israeli occupation had cut and destroyed 1000 Olive trees, 150 grape trees and 1000 stone-fruit trees.

In regards to the Israeli military checkpoints around the village, there is one permanent checkpoint.

## Development Plans and Projects

### Implemented Projects

Al Khas and An Nu'man village council has implemented several development projects in Al Khas and An Nu'man, during the years 2007 to 2009, as shown in Table 11.

Name of the Project	Type	Year	Donor
Completing the Construction of a Kindergarten	Educational	2007	Ministry of Finance
Pavement of Internal Roads	Infrastructure	2008	Ministry of Finance
Establishment of a Public Park	Recreational	2009	Cooperative Housing Foundation
<b>Source: Al Khas and An Nu'man Village Council, 2009</b>			

### Proposed Projects

Al Khas and An Nu'man village council, in cooperation with the civil society organizations in the village and the village residents, looks forward to the implementation of several projects in the coming years. The project ideas were developed during the PRA workshop that was conducted by ARIJ staff in the village. The projects are as follows, in order of priority, from the viewpoint of the participants in the workshop:

1. Establishment of a sewage network.
2. Construction of wells and rainwater harvesting cisterns.
3. Reclamation of agricultural lands and the establishment of greenhouses.
4. Establishment of small-scale treatment plants on household level.
5. Conducting awareness workshops for farmers and supporting agricultural production inputs.
6. Construction of a health clinic or center.
7. Strengthening the water network and providing the village with more quantities of water.
8. Providing more containers in An Nu'man area.

## Locality Development Priorities and Needs

Al Khas and An Nu'man suffer from a significant shortage of infrastructure and services. Table 12 shows the development priorities and needs in the village.

No.	Sector	Strongly Needed	Needed	Not a Priority	Notes
<b>Infrastructural Needs</b>					
1	Opening and Pavement of Roads	*			9km*
2	Rehabilitation of Old Water Networks		*		2km
3	Extending the Water Network to Cover New Built up Areas		*		2km
4	Construction of New Water Networks		*		2km
5	Rehabilitation/ Construction of New Wells or Springs			*	
6	Construction of Water Reservoirs		*		
7	Construction of a Sewage Disposal Network		*		7km
8	Construction of a New Electricity Network		*		2km
9	Providing Containers for Solid Waste Collection	*			15 container
10	Providing Vehicles for Collecting Solid Waste			*	
11	Providing a Sanitary Landfill			*	
<b>Health Needs</b>					
1	Building of New Clinics or Health Care Centres		*		1 clinic
2	Rehabilitation of Old Clinics or Health Care Centres			*	
3	Purchasing of Medical Equipment and Tools	*			
<b>Educational Needs</b>					
1	Building of New Schools	*			secondary
2	Rehabilitation of Old Schools		*		elementary
3	Purchasing of New Equipment for Schools		*		laboratories
<b>Agriculture Needs</b>					
1	Rehabilitation of Agricultural Lands	*			300 dunums
2	Building Rainwater Harvesting Cisterns	*			25 cistern
3	Construction of Barracks for Livestock	*			10 barracks
4	Veterinary Services		*		
5	Seeds and Hay for Animals		*		
6	Construction of New Greenhouses	*			15 greenhouses
7	Rehabilitation of Greenhouses			*	
8	Field Crops Seeds			*	
9	Plants and Agricultural Supplies			*	

\*3km is a main road, 2km internal road and 4km agricultural road

## References:

- *Al Khas and An Nu'man Village Council*. 2009.
- *Applied Research Institute - Jerusalem (ARIJ)*. (2008 - 2009). Bethlehem, Palestine: Geographic Information Systems and Remote Sensing unit Database, 2009.
- *Applied Research Institute - Jerusalem (ARIJ)*. 2009. Bethlehem, Palestine: Urbanization Unit Database, 2009.
- *Directorate of Education - Bethlehem*. 2008/2009. Bethlehem, Palestine: A database of schools.
- *Palestinian Central Bureau of Statistics*. 2009. Ramallah, Palestine: General Census of Population and Housing Censuses, 2007.
- *Palestinian Ministry of Agriculture (MOA)*. 2007/2008. Bethlehem, Palestine: Directorate of Agriculture data.
- *Palestinian Water Authority*. 2009. Ramallah, Palestine: Quantities of Water Supply in the West Bank Governorates, 2008.